
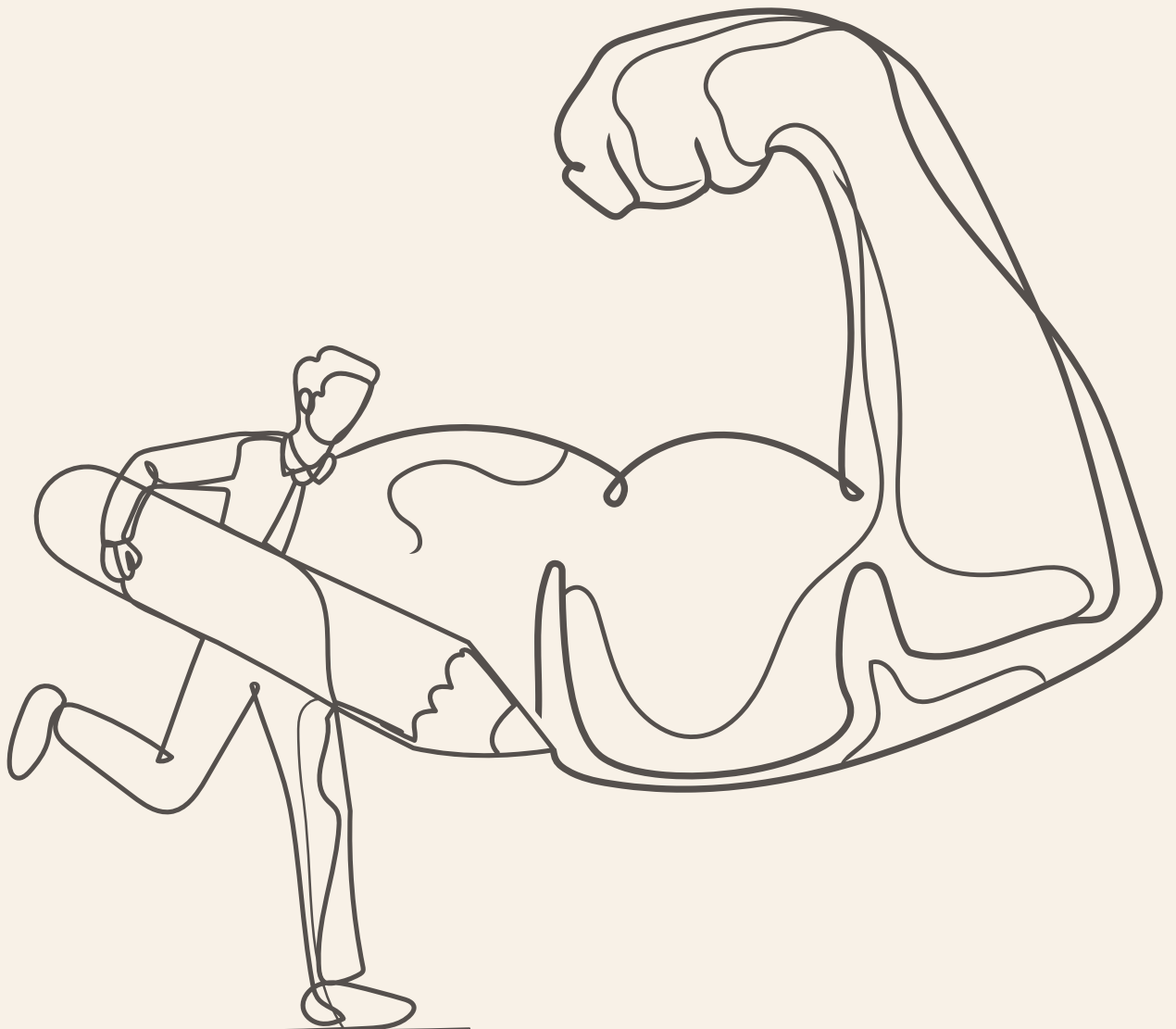


# TEXVIEW

JAN-JUNE 2023 |  TEXCHEM



make it

**STRONG**

# EDITOR'S MESSAGE

Hello Texchemers

Greetings and welcome to the first edition of Texview 2023. You may notice that this edition is a compilation of two quarters, and you might wonder why we made this decision. In quarter one, we experienced a temporary shortage of articles. We believe in creating a magazine that represents the collective voice and achievements of our various divisions and clubs, thus our decision to combine the two quarters into one comprehensive edition. I encourage our Texchemers to continue sharing your stories and ideas so that our future editions are even more vibrant and engaging.

This brings us to the theme of our Texview 1H 2023 cover : "Make it Strong." Inspired by our Group CEO's tagline for the year, this cover design encapsulates our commitment to resilience, unity and growth. In these challenging times, we have witnessed the unwavering strength of our organisation and the dedication from you, Texchemers. Together, we have overcome obstacles, adapted to change and emerged strong. Let us carry the spirit of "Make it Strong" forward into 2023, as together we face new challenges and explore new opportunities. Let us as one, embody the strength, resilience and excellence that defines us as a Texchemer.

Enjoy this edition of Texview and let it serve as a reminder that we are all privileged to be a part of this great organisation.

**ADELINE YEOH**

*EDITOR*

# Table of CONTENTS

TEXVIEW JAN-JUNE 2023

Editor's Message	00
Table of Contents	01
Calendar of Events - July to September	02
President and Group CEO's Message	03

## **Around The Group**

Miraku Celebrates Grand Opening	04
Unveiling Our New Office with a Soft Launch	12
Texchem Group Managers' Conference 2023	16
Group CEO Communication Session 2023	18
Analyst Briefing for 4QFY22 Results	20
Think Big Program	22
Charting the Path Forward for Restaurant Division	24
Joint Meeting for HODS	26
Friendly Working Environment for Better Productivity	28
Sushi King Celebrates One Million Happy Members	29
Texchem and Tzu Chi CSR Partnership	30
IWD Celebration at Texchem	32
Let's Bake !	36
National Health Screening Initiative	38
Back to School Program 2023	40
Gua Tempurung and Bukit Batu Putih Exploration	42
Baking with Science : Sourdough	45
Service Awards	47
Welcome Aboard	50

2023

# CALENDAR OF EVENTS

July to September

## JULY

July 6

### ZUMBA CLASS - Texchem Ladies' Club

*Osaka Training Room,  
Wisma Texchem*

July 13

### ZUMBA CLASS - Texchem Ladies' Club

*Osaka Training Room,  
Wisma Texchem*

July 20

### ZUMBA CLASS - Texchem Ladies' Club

*Osaka Training Room,  
Wisma Texchem*

July 22

### MONTHLY HIKE - Mt Kinabalu Club

*Bukit Mertajam - Hua Guo  
Shan 328 Rainbow Stairways*

July 29

### BACK TO THE NATURE TEAM BUILDING -

*Jointly organised by  
Texchem Ladies' Club &  
Mount Kinabalu Club*

*Tropical Spice Garden,  
Penang*

## AUGUST

August 10

### 1H 2023 ANALYST BRIEFING

*Level 3 Wisma Texchem*

August 12

### MONTHLY HIKE - Mt Kinabalu Club

*Tar Road - 84 - Penang Hill*

August 26

### MONTHLY HIKE - Mt Kinabalu Club

*Paya Terubong - Namsua*

## SEPTEMBER

September 9

### MONTHLY HIKE - Mt Kinabalu Club

*Heritage Trail - Penang Hill*

September 23

### MONTHLY HIKE - Mt Kinabalu Club

*Esen Beach (Pantai Esen)*



# PRESIDENT & GROUP CEO's

## MESSAGE

TEXVIEW JAN-JUN 2023



### Dear Texchem family members

I hope this message finds you in good health. As we reach the halfway mark of 2023, let us take a moment to reflect on our group's performance, acknowledge the prevailing global political and economic situation and its impact on our company and outline our plans for the future. There is no denying that the global economy continues to be volatile and the political climate remains uncertain. These external factors have created an environment that requires us to navigate through rough waters.

In 1QFY23, Texchem's revenue stood lower at RM268.5 million versus RM307.5 million in 1QFY22. PBT declined from RM18.9 million recorded in 1QFY22 as compared to RM2.2 million in 1QFY23, predominantly owing to higher input cost in addition to weaker market demand experienced across all our business divisions. Sequentially, Texchem registered a net loss of RM0.2 million for the quarter under review as a result of the aforementioned factors along higher tax expenses.

The world around us is constantly evolving and it is crucial for us to stay informed and adapt to the changing political and economic climate. Currently we find ourselves amidst a highly challenging business operating landscape due to market uncertainties, sluggish global market demand in certain sectors and rising operating cost. While these circumstances pose great challenges, they may also present us with opportunities for growth and innovation.

We have experienced some setbacks and we acknowledge the challenges that lie ahead. However, it is in times like these that is crucial for each and every one of us to demonstrate resilience and our commitment to our goals. The management team is closely monitoring the developments and adjusting our strategies to ensure that we can thrive in the face of adversity. We understand the importance of staying focused on our objectives and maintaining our dedication to the work we do. Your continued effort and commitment are vital to our collective success.

One of the key highlights for 2023 will be the strengthening of our ESG initiatives. We have recently revamped Texchem's Sustainability Committee, and the ESG roadmap shall be established by the respective persons-in-charge in their own areas of expertise. With a strong and comprehensive sustainability reporting in place, this will ensure our company's steady progress towards them, improve our corporate reputation, build stakeholders confidence, increase innovation and improve risk management.

As we approach the second half of 2023, I urge each and every one of you to maintain a positive mindset. A positive outlook will allow us to face adversity with unwavering determination, overcome obstacles and emerge stronger, as one. We must also strengthen open communication, collaboration and innovation. Share your ideas, concerns and suggestions and together, let us find creative solutions.

In closing, I wish to reiterate that we are committed to weathering these storms as a team. As one, we have overcome countless hurdles in the past and I have no doubt that we will do so again. Our focus remains on our long-term goals and our shared vision.

Your hardwork, dedication and commitment to excellence have been instrumental in our success thus far. The management takes great pride in your accomplishments and we express our heartfelt gratitude to each member of our talented team. Stay positive, stay resilient, and together, we shall navigate these turbulent times.

Texchemers, let us Make it Strong in 2023!

**YAP KEE KEONG**

President & Group CEO

For the first time since its inception in 2007, Miraku celebrated its Grand Opening Ceremony on 23 May 2023 at the extensively refurbished G Hotel Gurney. The fine-dining restaurant features a brand-new look, with two authentic teppanyaki counters, private rooms, and bench seatings. Helmed by executive chefs from Japan, Miraku continues to delight enthusiastic patrons with newly created a la carte, kaiseki and omakase menus from time to time.



Distinguished guests were invited to indulge in a timeless Japanese culinary as well as cultural experience. Y.A.B. Tuan Chow Kon Yeow, Chief Minister of Penang graced the event as the guest-of-honour. Joining him were none other than YB Lim Siew Khim, State Assemblyman of Sungai Pinang, Mr Michael Hanratty, General Manager of G Hotel and Mr Kosuke Kuroe, Deputy Consul General of Japan.

## Miraku Celebrates Grand Opening

The event kicked off with a welcome keynote address by our Executive Chairman Tan Sri Fumihiko Konishi, followed by a short speech by Y.A.B. Chow. He congratulated Texchem on Miraku's reopening and thanked Tan Sri for bringing in various Japanese restaurant brands into Malaysia, at the same time expressing his delight that Miraku has returned to G Hotel with a new chapter and lots of prosperity in years to come.



The master of ceremony for the evening introduced four lovely ushers adorned in exquisite kimonos. Penang's Pink Hibiscus Kimono Centre very kindly provided those lovely costumes and dressing services on a small donation. The colourful and sophisticated setting mesmerized all guests throughout the evening.



Our VIPs were then invited to officiate the grand opening with a ribbon cutting ceremony, followed by a sake barrel breaking ceremony. With the restaurant officially reopened, guests were invited inside to witness the maguro cutting and slicing performance. Executive Chef Mr Masato Tsuki impressed the guests by showcasing the art of cutting and slicing the gigantic 63kg tuna at the sushi counter.



After the breath-taking performance, guests were ushered to their seats to enjoy the rest of the evening with a specially prepared kaiseki dinner which includes savouring fresh tuna sashimi paired with selected exquisite wines.

The evening came to an end when our Chief Minister took his leave after enjoying an immersive and interactive dining experience at the Teppanyaki Counter with Tan Sri Konishi and the other VIPs.

Miraku, meaning “Heavenly Taste”, has been a prominent culinary landmark for 16 years, and still going strong with each passing year. The team at Miraku invites you to savour the artistry, flavours and warm hospitality that awaits you when you dine with them.

























# Embracing the Future:

## Unveiling Our New Office with a Soft Launch

**I**n the ever-evolving world of business, adaptability and innovation are paramount. On 19 June 2023, we were thrilled to announce the soft launch of our brand new office space at Level 18 Menara Boustead Penang, designed to foster collaboration, creativity, and employee well-being.

The program started with an introduction of our new office by Cynthia Ooi, our Group HR Officer. This was followed by a speech by Mr Yap Kee Keong, our President and Group CEO. Mr Yap expressed that with an open office concept and a modern aesthetic, he hopes that this transformation will not only redefine our physical workspace but also enhance our team's productivity, creativity and promote better communication between the different departments and companies.

Tan Sri Konishi, our Executive Chairman, in his Special Address informed that he first came across this open office concept when he visited Kewpie in Japan. Subsequently, this open office concept was adopted at Sushi King office in Wisma Texchem. Tan Sri Konishi expressed that now at Penang HQ, we have the most modern looking office, and this statement was greeted with loud applause from Texchemers. Tan Sri Konishi hopes that with this open office concept, it will promote a sense of camaraderie among our staff.





## Some of the feature highlights of our new office are:

### ***Aesthetics and Design:***

Walking into our new office, the first thing that strikes you is the stunning modern design. The thoughtful arrangement of furniture and strategically placed communal areas facilitate spontaneous interactions, whether it's a quick chat at the coffee station or a brainstorming session in one of the cozy breakout areas. Comfortable seating options, ergonomic workstations, and the many meeting rooms ensure that our employees can work efficiently while enjoying a conducive environment.

### ***Enhanced Collaboration:***

One of the primary goals behind the open office concept is to foster collaboration and encourage cross-functional partnerships. By removing physical barriers, employees have easy access to their colleagues, allowing for quick information sharing and problem-solving. This dynamic environment facilitates teamwork and creates a sense of unity among our staff, enabling them to leverage on each other's expertise and work collectively towards shared goals.





## ***Boosting Creativity and Innovation:***

Our new office is designed to inspire creativity and innovation. With dedicated brainstorming areas, employees can freely express their ideas, sketch out concepts, and collaborate on projects in real-time. The open layout also encourages spontaneous encounters and sparks new connections, further fuelling the creative process.



Texchemers have expressed excitement about the fresh, contemporary look of the office and the opportunities it presents for increased interaction. The open environment has led to a more inclusive atmosphere, with our colleagues from different departments engaging in conversations and building relationships they may not have otherwise established.

The soft launch of our new office marks a significant milestone in our company's journey towards embracing innovation and enhancing employee collaboration. We are excited to witness the continued positive impact this transformation will have on our team's productivity, motivation and overall well-being.







***We look forward to welcoming you***

to our beautiful open office and sharing the excitement of our new working environment with you.



# Texchem Group Managers' Conference

## 2023

The 2023 conference was held in full physical form on 24 February 2023, marking the return to norm after holding 2021 and 2022 annual conference in virtual and hybrid format. Once again, participants from Thailand, Singapore, Vietnam, Indonesia, Myanmar, and throughout Malaysia congregated at E&O Hotel Penang, to receive updates on the Group's performance, and alignment on the way forward for 2023 and beyond.

Mr Yap Kee Keong called the meeting to order with the Group CEO's Address. While Mr Yap congratulated the Group on continued progress made in operational and financial performances, Mr Yap reminded all Texchemers not to be Complacent, but Be Competitive! The Group shall continue to strengthen our competitiveness and agility to thrive in business environment facing heightened levels of volatility, uncertainty, complexity, and ambiguity (VUCA).

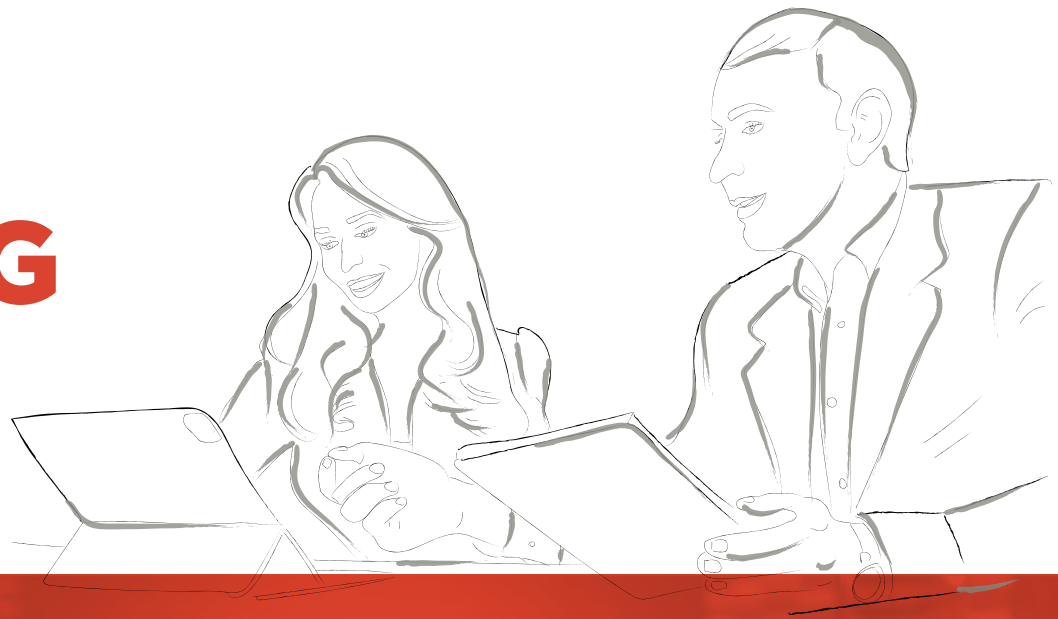
Key direction set for 2023 are acceleration of mindset change to embrace team work, aggressiveness, ownership, innovation, and risk taking to achieve desired outcome, adopting Healthy and Competitive Work Environment (HCWE), and to avoid Busy Syndrome so as to focus on creating maximum value from our effort.

Mr Yap ended his address with the call to "Make It Strong" in 2023.



# MAKE IT STRONG

TEXVIEW JAN-JUN 2023



Tan Sri F. Konishi, our Founder and Executive Chairman, took the stage next to address the topic of Leadership and Texchem's next 50 years. He gave an inspiring account based on personal reflection of his 50 years entrepreneurship journey. He generously and openly shared the successes as well as shortfalls the Group has navigated since 1973, which made his empire building a colourful and stirring journey full of lessons for the future.

Tan Sri's business philosophy to venture into new businesses not already done by others within the core competencies of the Group, attracting and retaining top talents, adopting a big picture view, be data and research focused for new business ventures are hallmark of the DNA of Texchem, and shall continue to sharpen our vision and strategy for the Group's next 50 years.

Before Tan Sri Konishi ended the Executive Chairman's address, he officially launched the Big Idea Program as a component of the Group's plan for the next 50 years.

After breaking for lunch, Division Heads from Industrial, Polymer Engineering, Food, and Restaurant Divisions presented the respective Division's financial performance, notable developments, and goals for 2023.

To cap the end of the Group Managers' Conference 2023 and before participants returned to their respective bases, participants were treated to an exquisite dinner at Villa Primavera for Texchemers from various Divisions to reconnect and celebrate the successes of 2022.

Before we meet again in the next Managers' Conference, let us live up to the tagline for 2023 to **Make Texchem STRONG!**

Article by  
**Khaw Teoh Su Ping**  
(Texchem Corporation Sdn Bhd)

# Group CEO Communication Session 2023

**Communication** helps us build relationships through sharing of experiences and helps us connect with others. It is the essence of life, allowing us to express feelings, pass on information and share thoughts. That is why CEO communication is important and is conducted yearly at Texchem.

During our CEO communication session, we are provided clarity on the vision, strategy and expectations. Company performance is shared with the employees and from this sharing, we understand how each of us have an important role to play to the overall company strategy and direction and how it will impact our organisation's success.

In 2023, the Group CEO communication session was held on 24 March at the Lecture Hall of Wawasan Open University for executives to managerial level employees, with over 100 participants. Just two weeks earlier on 3 March, Mr Yap Kee Keong conducted his CEO communication for our Central Region colleagues at Wisma Texchem.

In his speech, Mr Yap informed that we expect to see many challenges ahead in 2023, it is therefore important that we adopt a leadership mindset and be able to come up with solutions to overcome challenges, place emphasis on collaboration and continuous improvement and practise open communication.







Mr Yap then went on to share other beneficial topics on how mindset change are welcome for all of us to move forward together to become a strong organisation. We need to foster a Healthy Competitive Work Culture and be results oriented. Each of us need to get out of the vicious cycle of the Busy Syndrome so that we are able to create more value to our daily work.



Another change to our mindset was to move from the Push culture to the Pull culture where motivation plays a key part in achieving the Best Working Place with passionate and happy employees to generate a sustainable quantum leap to perform as ONE in the organisation. Mr Yap also touched on Environmental, Social, and Governance (ESG) matters. ESG plays an important role in shaping the corporate behaviour in creating value not only for the shareholders, but for society and the planet as a whole. Last but not least, in order to set the correct mindset, consideration is to be taken through logical decision making and timely execution. One needs to be able to make a decision and once the decision is made, execution of task has to be in a timely manner. Mr Yap urged all of us to work as one to Make it Strong in 2023.

It was a great 3 hours of motivational and inspiring talk and our sincere appreciation to Mr Yap for taking the time to convey to us all this valuable sharing.



Article by  
**Max Chin**  
(Texchem Corporation Sdn Bhd)

# Analyst Briefing *for* 4QFY22 Results

As part of our Investor Relations program, we conducted an analyst briefing to provide updates on our 4QF22 results on 2 March 2023 at Level 3 of Wisma Texchem, the head office of Sushi King in Subang. The event was attended by analysts, private investors, and others who were eager to gain insights into Texchem Resources Bhd.


The event commenced promptly at 2.30 pm following the arrival of attendees at 2 pm. Our President and Group CEO, Mr Yap Kee Keong, delivered a brief introduction of the company, highlighting its achievements and milestones. Additionally, Mr Yap presented the financial results for the fourth quarter of 2022 and shared valuable insights regarding the outlook for each division within Texchem. After that our Executive Chairman, Tan Sri Konishi delivered his closing remark.







At the end of the presentation, a Q&A session was held, during which Tan Sri Konishi and Mr Yap responded to queries posed by the attendees. Tan Sri Konishi also shared the inspiring journey of Sushi King, captivating the audience with his story. The event concluded around 5 pm, but the enthusiasm and curiosity of the attendees remained high. Many participants engaged in further discussions with both Mr Yap and Tan Sri Konishi, seizing the opportunity to delve deeper into their knowledge and gain more clarity about our company.



The guests were served sushi and coffee from Sushi King and Doutor Coffee. The Sushi King team deserves special appreciation for creating a friendly and welcoming environment, contributing to the overall success of the event. We extend our thanks to the entire Sushi King team for their assistance in making this event possible.

Article by  
**Hong Lee Chien**  
 (Texchem Materials Sdn Bhd)





# Think **BIG**

Program ....  
*Sustain and Succeed !*

At the Group Managers' Conference on 24 February 2023, our Executive Chairman, Tan Sri Konishi in his Chairman's address to the participants spoke about Texchem celebrating a major milestone this year; our 50th anniversary. Tan Sri Konishi shared his journey since 1973 and how various companies and businesses have been established, some succeeding and some did not. However, what was important was that we are not disheartened by the failures but instead learn from it, continue to put in effort and persevere in order to grow.

Tan Sri Konishi then challenged Texchemers to do something new and bold. He encouraged Texchemers to reach for new possibilities and look into ideas for new venture business to sustain the growth of Texchem into the next 50 years; thus the launching of the Think BIG program.

Business Venture Ideas for Growth  
=  
**Think BIG Program**

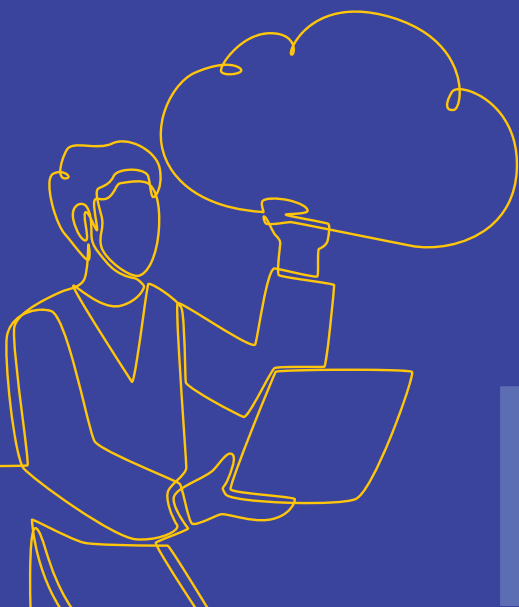
**T**hink BIG program aims to empower employees to participate in generating new business venture ideas and for the business sustainability of the organisation. Employees may propose new business ventures or even propose how an existing business can be re-invented to do better. For proposals that are successful, the proposer stands a chance to be involved in the running of the new business.

All proposals submitted shall be filtered by the Corporate Affairs Committee (CAC). Proposals submitted at the initial stage may be at the concept level, however, CAC may reach out to the proposer to provide more details. Proposals that are shortlisted shall be presented to the Executive Chairman for his review and consideration.

Texchemers, if you have the passion to start and lead a new business and open up new possibilities and potentials for yourselves, start to Think BIG and submit any brilliant ideas you may have by emailing your proposal to ***[thinkbigprogram@texchemcorp.com](mailto:thinkbigprogram@texchemcorp.com)***.

Together, let us create the next 50 years of Texchem.

Article by  
**Toru Asano**  
(Wilpack Food Services Sdn Bhd)







## Charting the Path Forward for Restaurant Division



The recent visit of our esteemed Executive Chairman, Tan Sri F Konishi to Sushi King's head office on 14 June 2023 marked a significant milestone in our division's journey. The restaurant division team from Sabah and Sarawak also flew in to join the meeting.

The purpose of the visit was to engage with the leadership team, understand the challenges we face in our operations, and collaborate on developing strategies to overcome them. This visit by Tan Sri Konishi demonstrated a deep commitment to ensure the continuous success of our Restaurant division and emphasised on the importance of effective communication, teamwork and innovation in navigating the ever-changing business landscape.





By actively listening to the concerns and insights shared by our restaurant team, Tan Sri Konishi displayed an open and inclusive leadership style, fostering an environment of trust and collaboration. The visit also served as a platform for brainstorming and formulating strategies to address the challenges. By implementing the strategies developed during this visit, we can strengthen our position in the market, drive sustainable growth and ensure long-term success.

Tan Sri Konishi stressed on the importance of customer relationships. Understanding the evolving needs and expectations of our customers is crucial.

Tan Sri Konishi also highlighted on the importance of building strong relationships, enhancing customer experience and leveraging customer feedback to drive innovation and deliver value-added solutions.

As we move forward, it is crucial that we remain steadfast in our commitment to implementing these strategies. By leveraging on the expertise and insights of our Executive Chairman and working together as a cohesive team, we can overcome challenges, seize opportunities and create a prosperous future for our division and our organisation.

Article by  
**Haliza Mohd Basir**  
(Sushi King Sdn Bhd)

# Let's Work as a Team to Make it STRONG

## Joint Meeting for HODs

Texchem-Pack (M) Sdn Bhd and Texchem-Pack (PP) Sdn Bhd held a joint meeting for the HODs on 10 March 2023. The objective of the meeting was for the HODs to get to know each other and for our Executive Director, Mr Khow Hong Cheong to update on both companies' performance.

The meeting kicked off at 10 am with an ice-breaking session followed by a brief introduction of each HODs by Mr Khow. Mr Khow then shared on the Polymer Engineering division's quarterly results, budget and each department's KRA setting. Moving forward, Mr Khow stressed that it is important for everyone to work well together in 2023 as it is a year full of many uncertainties and challenges as a result of US-China trade war, Russia- Ukraine war, increase of Imbalance Cost Pass-Through (ICPT) surcharge, manpower shortage, political and economic challenges. Hence, we have to work effectively together as a strong team in order to achieve the year 2023 planned business target.





Mr Khoo urged all HODs to use this business slow down period as an opportunity to review our Standard Operating Procedures and plant machinery maintenance so that we ready ourselves for the recovery of economy and business activity ramp-up in future. At the end of the meeting there was a lively Q&A session and sharing among HODs. The meeting ended at 12 pm with lunch served. May everyone benefit from this fruitful session and be prepared for the challenges ahead.

Let's work together as a strong team and move toward the direction of "Strong Organisation". Let's keep our momentum going and we can make it!

Article by  
**Ernest Tang**  
 (Texchem-Pack (M) Sdn Bhd)





## Friendly Working Environment for Better Productivity



Workplace stress can cause an adverse effect on workers' physical and mental health, which may lead to anxiety, burnout, depression and substance abuse. Workers who are stressed at work are more likely to engage in unhealthy behaviors, have low morale and also contribute to negative work ethics. As such workplace stress not only affects the worker, it also has adverse effects on a company's performance.

In order to relieve employees from industrial fatigue and to improve their intellectual wellness, Texchem-Pack (Johor) Sdn Bhd (TXPJ) organised a contest during the World Cup 2022 season.

This contest was open to all employees of TXPJ where they were able to showcase their creativity in drawing (Peraduan Melukis Poster), guess the winner (Peraduan Teka Pasukan Juara) and also a contest to test their knowledge on World Cup 2022.

We believe that a culture where there is work and play will motivate employees, keep them engaged and increase their creativity. Ultimately, our goal is to have happy employees as happy employees are productive employees.

Article by  
**Siva Supermaniam**  
(Texchem-Pack (Johor) Sdn Bhd)

# CONGRATULATIONS TO ALL THE WINNERS



# SUSHI KING CELEBRATES ONE MILLION HAPPY MEMBERS



*March 2023 marked a momentous milestone for Sushi King as the brand amassed one million members in its renowned loyalty program through the Sushi King App.*

This achievement reflects the brand's loyal and strong customer base with great interest in Japanese food culture. In celebration of this success and as a gesture of gratitude to its members, Sushi King launched its 1 million Happy Members' campaign from 1 May till 31 May 2023 offering prizes worth more than **RM 1,000,000!**

Reaching this one million happy members milestone would not have been possible without our long-supporting customers, and we are extremely humbled and grateful for this. With this campaign, we hope to give back to our customers and make their dining experience with us even more special and memorable.

*To all Texchemers,*

if you are not a member yet, do download the **Sushi King App** from the Google Play Store, Apple App Store or Huawei App Gallery today.

Article by  
**Rowena Lau**  
(Sushi King Sdn Bhd)







# // Texchem & Tzu Chi CSR Partnership



## Visit to Penang Tzu-Chi Jing Si Hall ...

On 3 February 2023, a group of Texchemers (34 employees including Mr Yap Kee Keong, President & Group CEO) from Penang Head office and factories visited the Penang Tzu-Chi Jing Si Hall located at Macalister Road. The purpose of this visit was to handover Texchem's contribution towards Tzu Chi charity funds:

**RM30,000**  
for  
Dialysis  
Centre Fund

**RM10,000**  
for  
Environment  
Protection Fund

**RM10,000**  
for  
Flood Relief  
Fund

Texchem Group has been making contributions to Tzu Chi charity funds for the past 5 years as part of its CSR program. 2017 was the first year our organisation and staff came together to raise funds for Tzu Chi and a total of RM180,000 has been donated to Tzu Chi since then. In addition to this, Texchem Group has also donated “Tex-Shield” face shield, sanitizers under its PPE contributions during the Covid-19 pandemic.

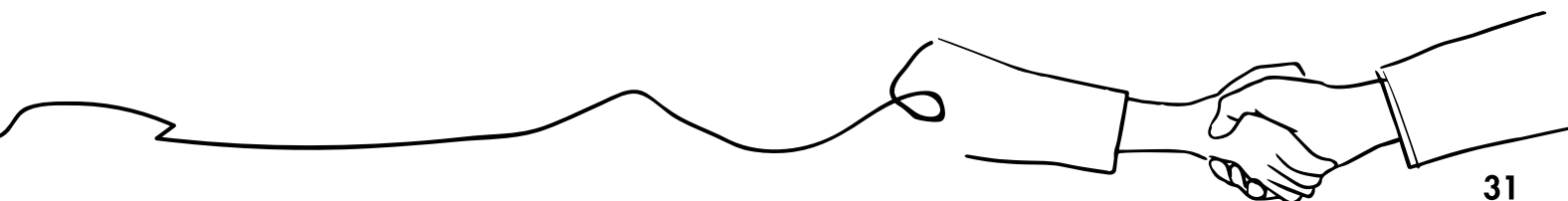
Upon arrival, the group was served biscuits and tea (products of Tzu Chi) while listening to a briefing on the history of Tzu Chi organization, its major missions of Charity, Medicine, Education, Humanistic Culture, Environmental Protection and etc. We were also taught the spirit of the Bamboo Bank which encourages everyone to continuously do good deeds and purify their hearts. No good deed is too small and the power of pure intention is immeasurable. Indeed, Tzu Chi Foundation began with donation of pennies.

The program continued with Mr Yap sharing his experience of adopting a socially conscious approach in our organization which has brought about positive changes, cultivating courage and patience in employees so that they can endure and overcome hardships. Ms Khaw Teoh Su Ping then gave a presentation on among others, an introduction to Texchem Group, its core business divisions and Texchem partnerships with Tzu Chi. Thereafter, a few Texchemers namely Ms Cynthia Ooi, Mr Khaw Hong Cheong and Mr Yeoh Hoon Suan were called upon to share their views on the briefing and sharing heard earlier.

Texchemers were then segregated into 2 groups for a guided tour of the Tzu-Chi Jing Si Hall. The photographs depicting the humble beginnings and milestones of Tzu Chi organisation can be seen along the walls of the hall. We were also introduced to the products of Tzu Chi which are available for sale such as noodles, rice, snacks, tea and others.

The visit ended with the mock cheque presentation and group photos. A few Texchemers were interviewed for their thoughts on the whole event. Before leaving the Tzu-Chi Jing Si Hall, each Texchemer received souvenirs, blessings and wisdom from the elders.

Article by  
**Woon May Sin**  
(Texchem Corporation Sdn Bhd)





# IWD

## Celebration at Texchem

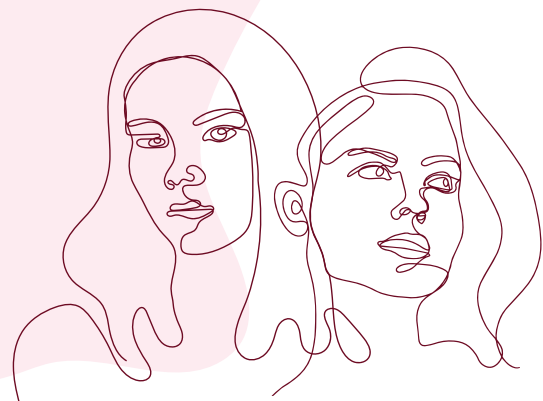
### **International Women's Day (IWD)**

is celebrated on March 8 of every year, and it is a global celebration of the social, economic, cultural, and political achievements of women. The first International Women's Day was observed in 1911 in Austria, Denmark, Germany, and Switzerland.

Over the years, International Women's Day has become a global movement, with people around the world using the day to highlight women's issues and advocate for gender equality. In 1975, the United Nations officially recognised March 8 as International Women's Day.

8  
*March*

**Today,** International Women's Day is celebrated in many ways, including marches, rallies, and other events, as well as through social media campaigns and other forms of activism. The day continues to serve as a reminder of the ongoing struggle for women's rights and gender equality.





To celebrate our Texchem ladies, Texchem Ladies' Club organised a get-together photography session. Our ladies came to work dressed in purple, white and green, colors of IWD.

At Wisma Texchem and Northern region offices, our ladies were presented with a stalk of rose from their superiors.



Women's  
HAPPY  
Day

IWD is such a memorable day to honor women's remarkable deeds and to unite as a force to achieve gender equality across the world. At Texchem, the contributions from the female staff are truly appreciated by the management and this makes us proud to be female employees of Texchem.

Article by  
**Wong Siew Tien & Rowena Lau**  
(Eye Graphic Sdn Bhd) & (Sushi King Sdn Bhd)













# Let's Bake!

On 15 April 2023, Texchem Ladies' Club organised a baking class for Texchem ladies to learn to make Rainbow Yogurt Cheese Cake at Bake in the Garden by Artisan, a baking school located at Gurney Paragon.

Before the class started, we were served some light refreshments and delicious snacks. Our trainer was Mr Roy who started the class by first explaining the whole process for baking the Rainbow Yogurt Cheese Cake. Since the base of the cake was already prepared for us, we proceeded to follow the steps to make the cheesecake. We were required to beat the cream cheese manually until it was smooth and shiny. This process took a while without the use of an electronic mixer. We were then guided step by step to add the other ingredients, after which the final mixture was poured into 6 bowls in various grams.





We then added different food colors into the 6 bowls to get the rainbow effect. Finally, it was time to put together the ingredients in the 6 bowls. We were told to pour the mixture slowly starting with the one with the highest grammage to the center of the cake base. After we have finished pouring the last bowl, we began to see the different colors which formed the rainbow cake.

The last step was to showcase our creativity. We were shown by Mr Roy how to decorate the cake, after which we went back to our own cakes and started decorating them. After we were done, we chilled the cake for 45 minutes before taking it home to enjoy with our family and friends.

Article by  
**Esther Gui**  
(Wilpack Food Services Sdn Bhd)







# National Health Screening Initiative



## What is NHSI ?



The National Health Screening Initiative (NHSI) is one of the initiatives of the Agenda Nasional Malaysia Sihat (ANMS) under Thrust 3, namely self-health management. The empowerment of the people in healthcare is important to enable the people to have the knowledge and skills to take appropriate action in the prevention of diseases. Regular health screening can detect noncommunicable disease (NCD) at an early stage, treatment can be given immediately and in turn can improve the quality of life.





In line with the Ministry of Health's (MOH) goal to provide free health screenings for Malaysians above the age of 30, Pejabat Kesihatan Daerah Petaling in collaboration with Texchem Ladies' Club – Central Region successfully conducted a one-day health screening service on 7 February 2023 for free.

This program which is conducted with the support of 8 medical officers lead by Dr. Azza, attracted a total of 49 Texchemers from Wisma Texchem.

Through this initiative, TLC is not only supporting the MOH's target-to-screen a total of 1.5 million people above 30 years for risk factors associated with NCD but also contribute towards Texchem's mission to empower people especially ladies to live healthier at every stage of life.

Article by  
**Noor Azlina Binti Madrus**  
 (Sushi King Sdn Bhd)



# BACK TO SCHOOL PROGRAM 2023



The Back to School community project was initiated at the end of 2020 by the Texchem Cultural Ambassador Committee to support low-income households who were badly affected by the economic impact caused by Covid-19. The program aims to give hope to children from poor households for a chance to continue their education journey.

As we reached out to various schools these past years to offer the poorest children balanced meals for each day they attend school, stories of their family's hardship and predicament tugged at our heartstrings. One way out of the vicious cycle of poverty for the children is through education, and thanks to the unwavering support of Texchemers, we have been able to sponsor meals for 62 students in the academic year 2022. Bravo, Texchemers!

For year 2023, our target is to reach out to 80 students, with each Division given the goal to raise RM3,000 each.

Once again, Texchemers have risen to the challenge, with each Division / Grouping exceeding their target.

Special mention goes to Corporate Services Division (Texcorp and TRB) for the highest amount raised at over RM6,000! Their collection doubled the target given thanks to their campaign of selling teddy bears to Texchemers as well as reaching out to external friends of Texchem who participated in their fund-raising campaign. In addition, we also noticed that many Texchemers have increased their contribution to meet the target of their respective Division.



On behalf of all students who will benefit from your kindness and generosity, we say a Big Thank You!

May your kindness return to you and your family in the same beautiful way it was offered.

Article by  
**Khaw Teoh Su Ping**  
(Texchem Corporation Sdn Bhd)







# Gua Tempurung and Bukit Batu Putih Exploration

The long awaited Texchem Mount Kinabalu Club's hiking trip to Gopeng, Perak which was originally scheduled in November 2022 but had to be postponed to 2023 due to the General Election finally took place on 11 and 12 March 2023. 37 Texchemers who joined the hiking trip departed from their respective regions and everyone met up in Gopeng. Texchemers from northern region managed to enjoy some Asian cuisine with traditional Baba Nyonya cooking style at Assam House, located in Medan Gopeng for the lunch before arriving at My Gopeng Resort, our accommodation for the night. The weather that day was warm and sunny with some clouds.



All of us checked in at about 2 pm and then gathered for a briefing by the guide who was taking us to Gua Tempurung. We then headed out on our caving adventure in trucks and four-wheel drives. I believe for most of us it was the first time and we were all in high spirits looking forward to having lots of fun and adventure. There was excited chatter and big smiles on our faces as we made our way to our destination. Finally we arrived at the entrance of Gua Tempurung to begin our the exploration.

Gua Tempurung is one of the longest and largest limestone cave in Peninsular Malaysia. It stands at a height of 578 metres and almost 1.9 km in length. The cave is the home to stunning stalagmites and stalactites, forming unique shapes that have charmed thousands of visitors since its discovery. There are many parts carrying interesting stories at the platforms in the cave, and we enjoyed the discovery walk. With level 3 of caving, all of us got wet and muddy as we explored the hundred million-aged cave. We took about 1.5 hours to complete the journey with underground secrets, tunnels and cave creatures. A few group photos were taken capturing the fascinating moment.

On the second day at 6.30 am, we got ready to head to Bukit Batu Putih for the



popular trail hike in Gopeng. It was a short and easy hike with epic views along the way. Our guides led us to the tailhead and the trail was clear and well-marked, and we easily followed the route straight all the way up to the top. The trail was mostly flat with gentle inclines which become more pronounced as we neared the summit. We came across many species of flora and fauna in this area. Luckily, the trail road was not steep nor slippery despite some rainy days earlier.







There are 3 peaks altogether with the furthest having the highest elevation. There are one or two other lookout points before reaching the summit, each with big limestones formation on which we could stand on top to take photos with stunning view as the background. Each of us spent some time to take some photos on the rocky outcrop before continuing our hike with long sharp grass marking the way for us. The hike up to this 340 metres hill was well-marked and is one of the trails with impressive summit views. On top of that we were very lucky to enjoy good weather.

Estimated 2 km for the entire trail up and down, we took about 2 hours to complete this hike. We returned to the resort to freshen up and had a short rest while some visited Hoga Gaharu Tea Valley. We bid farewell to each other before making our journey back home. Our appreciation to Texchem management for sponsoring this trip and we look forward to the next activity for Texchemers who enjoy the outdoors.



Article by  
**Lock Siew Fen**  
(Texchem-Pack (PP) Sdn Bhd)

# SOURDOUGH

Hello Texchemers,

Have you ever tried doing your own baking at home? I am here to share with you the benefits of baking. I usually like to bake on weekends, as it lightens my mood when I get to enjoy a tasty and fragrant piece of my home baked bread. Baking requires a lot of patience, time and persistent to make a perfect and nice bread. Baking can be a fun activity as we explore the science behind the baking process and learn about the chemical reactions that bring about the final product.

*Matcha Bread*



Today I would like to talk about sourdough. Sourdough is the oldest form of leavened bread used as early as 2000 BC by the ancient Egyptians. Sourdough is still not as well-known as normal bread. However, since MCO, many people have learned baking through YouTube. It is from social platforms that more and more people are aware of sourdough and the benefits of eating sourdough bread versus the conventional white bread. However, making sourdough involves more steps and you may think twice about baking it at home and instead just buy it from an artisan bakery.

Sourdough bread is made through a fermentation process that uses natural yeast and bacteria present in the environment to leaven the bread dough. To make a sourdough starter, it requires only two basic ingredients, flour and water.

The Lactobacillus, a gut-friendly bacteria is found in sourdough and this results in higher levels of lactic acid. During the fermentation process, the bacteria and yeast work to predigest starch in the flour and this makes it easier to digest for those with mild gluten intolerance compared to store bought bread. Consuming sourdough bread provides gastrointestinal benefit, control glycaemic index, boost amount of vitamins and minerals.



To make sourdough you must feed the starter until it becomes matured and suitable for baking. It takes more than 7 days for the starter to become stable and safe for baking. The bacteria consumes the flour and air and at the same time release carbon dioxide to leaven the dough. You can observe the starter bubbling and growing double or triple within a few hours. If the starter has matured, which mean it consistently grew double within 3 hours, then you can start to use it to make the sourdough. If you do not bake sourdough frequently, the starter must be kept in the fridge. Before the next baking, the starter must be fed at least two times to activate the bacteria into active mode again.



*Monitor the timing of the starter from double, triple and to peak*

But the process is not done yet as we now enter the important part of the baking process. Sourdough making process is long and tedious as compared to instant yeast bread. After the ingredient mixing, the bread undergoes bulk fermentation with few stretches and folds before it proceeds to the shaping process. After shaping, the dough is put into banneton basket for further proof for 12 hours in fridge.

Low temperature proof will slow down the fermentation time and increase the flavour of the bread. The last step is to bake the dough in the oven, using a cast iron pot. The cast iron pot can create high heat temperature and steam to leaven the bread.

**Finally, tada!** The bread is ready to be served! Please enjoy your teatime with a piece of delicious and fragrant sourdough bread.



*Cross section of Chocolate sourdough*



*Cross section of plain sourdough*

# LONG SERVICE

TEXVIEW JAN-JUN 2023

Thank You for being with us

## 35 Anniversary Year

### YAP KEE KEONG

Texchem Resources Bhd  
President & Group CEO

## 30 Anniversary Year

### SALIM BIN SULAIMAN

Texchem Life Sciences Sdn Bhd  
Technician

### NOR SUZANA BINTI SUHAIRI @KASSIM

Texchem Life Sciences Sdn Bhd  
Operator

### SHAHIDAN BIN ABDUL RAHMAN

Texchem-Pack (M) Sdn Bhd  
Senior Technician

## 25 Anniversary Year

### CHONG WEI LOON

Texchem Materials Sdn Bhd  
Deputy Managing Director

### TEOH AH CHU

Texchem-Pack (M) Sdn Bhd  
Executive - Customer Service

### MUHAMAD NAZIB BIN ALI

Texchem-Pack (M) Sdn Bhd  
Assistant Supervisor - Production

### CHAIRAT DEEPHAP

Texchem-Pack (Thailand) Co Ltd  
Senior Supervisor - Tooling

### CHADAPORN FUANGCHAN

Texchem-Pack (Thailand) Co Ltd  
Leader - QC

## 20 Anniversary Year

### ABDUL SALIM BIN BIDIN

Sushi King Sdn Bhd  
Manager - Kitchen Operations  
Design

### KHIN KHIN NYEIN

Texchem Food (Myanmar) Ltd  
Officer

### SAW LIN AUNG

Texchem Food (Myanmar) Ltd  
Assistant Supervisor

### KHIN KHIN SAN

Texchem Food (Myanmar) Ltd  
Leader

### CHIN SYE CHENG

Texchem Polymers Sdn Bhd  
Assistant General Manager - Sales  
and Operations

### AHMAD SAIDI BIN OTHMAN

Texchem-Pack (M) Sdn Bhd  
Staff Engineer I - Process

### AZIZAN BIN YUSOFF

Texchem-Pack (M) Sdn Bhd  
Engineer - Design



# 15 Anniversary Year

## THEIN OO

ASK Andaman Limited  
Supervisor II

## JULIA BINTI SIMON

Sushi King (East Malaysia) Sdn Bhd  
Regional Kitchen Trainer

## CASSY ANAK ROBARD LEE

Sushi King (East Malaysia) Sdn Bhd  
Assistant Restaurant Manager

## AQUADILLA REMMY ANAK PILATE

Sushi King (East Malaysia) Sdn Bhd  
Crew Leader

## RUBIAH ANAK JIGANG

Sushi King (East Malaysia) Sdn Bhd  
Crew Leader

## NOORIZAN BINTI MOHD ARSHAD

Sushi King Sdn Bhd  
Senior Executive - HR

## OOI SIEW LAN

Texchem Corporation Sdn Bhd  
Senior Manager I - Group Secretarial

## MIN NYI NYI SOE

Texchem Food (Myanmar) Ltd  
SR. Executive

## AUNG ZAW HTIKE

Texchem Food (Myanmar) Ltd  
Supervisor I

## THU ZAR NEW

Texchem Food (Myanmar) Ltd  
Assistant Q.C Supervisor

## KYI WIN

Texchem Food (Myanmar) Ltd  
Technician I

## ZAW TUN

Texchem Food (Myanmar) Ltd  
Technician I

## YIN YIN MYINT

Texchem Food (Myanmar) Ltd  
Senior Clerk

## HTAY HTAY PO

Texchem Food (Myanmar) Ltd  
Non-Executive 3 -QC

## CYRIL TINO

Texchem Life Sciences Sdn Bhd  
Technician - QC

## NOR HAZLIN BINTI HUSSEIN

Texchem-Pack (Johor) Sdn Bhd  
Assistant Manager - Key Account & Customer Service

## YAU BOON FOO

Texchem-Pack (Johor) Sdn Bhd  
Assistant Manager - Key Account & Customer Service

## TAN TEIK HUAT

Texchem-Pack (PP) Sdn Bhd  
Staff Engineer II - Tooling

## PACHARA SOMROOP

Texchem-Pack (Thailand) Co Ltd  
Manager - IM Production

## SUKRITTA YOUNGKARN

Texchem-Pack (Thailand) Co Ltd  
Senior Executive - Planning & New Project Management

## PHIROM CHEYHUM

Texchem-Pack (Thailand) Co Ltd  
Technical Assistant -TF

## MALIWAN RAKSA-ARD

Texchem-Pack (Thailand) Co Ltd  
Leader -TF

## UMAPORN JUNHIRAN

Texchem-Pack (Thailand) Co Ltd  
Operator

## DINH THI BICH HONG

Texchem-Pack (Vietnam) Co Ltd  
Chief Accountant / Assistant Manager-Finance

## LAM THI THUY NGUYEN

Texchem-Pack (Vietnam) Co Ltd  
Senior Officer-Sales Admin



# 10 Anniversary Year

TEXVIEW JAN-JUN 2023

## KAUNG MYAT SOE

ASK Andaman Limited  
Senior Driver

## WEE SIAW CHIN

Sushi King ( East Malaysia) Sdn Bhd  
Manager - Operations

## LEONYLA LISKA ANAK MATHEW

Sushi King ( East Malaysia) Sdn Bhd  
Assistant Restaurant Manager

## LARRY ANAK BELUN

Sushi King ( East Malaysia) Sdn Bhd  
Crew Leader

## LILY ANAK UMAL

Sushi King ( East Malaysia) Sdn Bhd  
Crew Leader

## MOHD ZAHARIM BIN UNTONG

Sushi King Sdn Bhd  
District Manager

## MARINA BINTI RAMELI

Sushi King Sdn Bhd  
Crew Leader

## RASHIDA BEGUM BINTI M P SHAIK MYDIN

Sushi King Sdn Bhd  
Crew Leader

## TEE CHAI HENG

Texchem Corporation Sdn Bhd  
Assistant Manager - Infrastructure

## TAN GUAT LAY

Texchem Corporation Sdn Bhd  
Assistant Manager - Group HR

## TEH GUAT LING

Texchem Corporation Sdn Bhd  
Executive - System

## THI YAY YAR YEIN

Texchem Food (Myanmar) Ltd  
Senior Accountant

## MEE NGE SOE

Texchem Food (Myanmar) Ltd  
General Worker

## NORMALA BINTI ABDUL KHAHAR

Texchem Food Sdn Bhd  
Executive-Sales Support

## GUNAVATHI A/P GUNENDRAN

Texchem Life Sciences Sdn Bhd  
Technical Assistant - BTC

## NORMIZAH BINTI ABDUL GHANI

Texchem Life Sciences Sdn Bhd  
Technical Assistant - BTC

## MD SHAH BIN MAMAD

Texchem Life Sciences Sdn Bhd  
Security Guard

## HASNIZAN BINTI RANI

Texchem Life Sciences Sdn Bhd  
Operator

## KHO WEI NEE

Texchem Polymer Engineering Sdn Bhd  
Senior Executive - Business Admin &  
Personal Assistant to Division COO

## GOH LAY KIAN

Texchem Singapore Pte Ltd  
Executive - Sales Admin

## RAMUNaidu A/L JAGANASAN

Texchem-Pack (Johor) Sdn Bhd  
Supervisor - Production

## SARIIAH BINTI AHMAD DAUD

Texchem-Pack (M) Sdn Bhd  
Officer - Document Control

## ASMA HANI BINTI HASHIM

Texchem-Pack (PP) Sdn Bhd  
Officer - Materials

## MUHAMMAD AIZAM BIN SURI

Texchem-Pack (PP) Sdn Bhd  
Assistant Supervisor - Production

## WIROJ CHEYTHUM

Texchem-Pack (Thailand) Co Ltd  
Store Operator

## PHAN BA NGUYEN

Texchem-Pack (Vietnam) Co Ltd  
Assistant Supervisor

## DANG DANH THAI DY

Texchem-Pack (Vietnam) Co Ltd  
Security Guard

## ABDUL LATIFF BIN NAINA MOHAMED

Wilpack Food Services Sdn Bhd  
Security Guard



# NEW RECRUITS

Welcome to the **TEXCHEM** Family

## TEXCHEM LIFE SCIENCES SDN BHD

### CHUA YEAN CHOO

Deputy Managing Director

### NOR AZLAN BIN MOHAMMAD NOOR

Senior Manager II - QA

### NUR SYAZNABILA BINTI AZMI

Senior Engineer - QA

### SUHAYL AZMIN BIN ZULKIPLI

Engineer - Tooling



**CHUA YEAN CHOO**  
DEPUTY MANAGING DIRECTOR

## TEXCHEM POLYMER ENGINEERING SDN BHD

### CHEONG XING LING

Assistant Manager - Division Finance

### LEE JIA YAN

Executive - Finance

### YONG CHIN WEI

Executive - Personal Assistant To Division President  
& CEO

## TEXCHEM-PACK (M) SDN BHD

### NUR FARAH IRDINA BINTI ZULKHAIRI

Officer - Customer Service

## TEXCHEM-PACK (PP) SDN BHD

### THOR SHYR WAY

Manager - Sales & Business Development

### LEE ENG SEANG

Manager - Finance

### MAIZATUL AKMAL BINTI ABD GHANI

Executive - HR & Admin

## TEXCHEM-PACK (THAILAND) CO LTD

### PIYAORN VORRAPANYAPORN

Senior Executive - Key Account  
Management

### TEEPAPON MADCHALAD

Officer - Safety

### THARATHON THONGTAE

Junior Office - IT

## TEXCHEM CORPORATION SDN BHD

### LEE SHI CHERNG

Assistant Manager - Software

## ASK ANDAMAN LIMITED

**HTAR HTAR WAI**  
Officer

## TEXCHEM FOOD (MYANMAR) LTD

**NWAY NWAY AYE**  
Junior Officer

**YE MIN KO**  
Senior Executive

## TEXCHEM FOOD SDN BHD

**TAN BOON MENG**  
Senior Manager I - Finance

## PT TEXCHEM INDONESIA

**ANDA PUTRA**  
Manager - Sales

**NIMROD SITORUS**  
Manager - Sales

**ABDUL RAHMAN**  
Executive - Admin

## TEXCHEM MATERIALS (VIETNAM) CO LTD

**NGUYEN TRUONG GIANG**  
Senior Executive - Sales

## TEXCHEM POLYMERS SDN BHD

**LAWRENCE NG YEE FOONG**  
Researcher

**NUR SYIFA NADIA BINTI ZAINOL**  
Executive - Business Administration

**AHMAD RIZUAN BIN MOHAMAD**  
Assistant Engineer I - Process

## TEXCHEM MARINE LABUTTA LIMITED

**HNIN YEE WIN**  
Accountant

**NANG KHAM LYUT**  
Account Officer

**HNIN PWINT AYE**  
Senior Manager

## WILPACK FOOD SERVICES SDN BHD

**NURUL HUDA BINTI HUSIN**  
Officer - QA Inspector

## TEXCHEM MATERIALS SDN BHD

**WONG SIN LONG**  
Senior Executive - Sales

**MUHAMMAD ROSLAN BIN MOHD  
SHAIK SULAIMAN**  
Senior Office - Inventory





## SUSHI KING SDN BHD

### KUAN LU YEE

Assistant Manager - Finance

### HATIQA FARHA BINTI MOHD ANAFIAH

Senior Graphic Designer - Marketing

### NUR SYAHIRAH BINTI MOHD SAID

Executive - Operations Support

### FAREEZ SYAZWAN BIN HUSSAIN

Executive - Operations Deployment

### NG PEY YI

Executive - Graphic Designer

### MOHAMAD FAKRUL NIZAM

### BIN MOHD ULU

Executive - SK Academy

### NURUL AFIQAH BINTI MOHAMMAD

### NADZREE

Executive - Quality Management

### SITI AMINAH BINTI RAZLAN

Executive - HR

### PONG KIT YEN

Assistant Restaurant manager

### SITI NURMAISARAH BINTI MAHMUD

Assistant Restaurant Manager

### NURSYAHIRAH BINTI TAJUL

### FADZLISHAM

Assistant Restaurant Manager

### MUMTAZAH ZAHRAA BINTI ABDULLAH

Assistant Restaurant Manager

### NOOR AQILAH BINTI MOHAMAD

### SHAARI

Assistant Restaurant Manager

### NURUL QASRINA BINTI SUHAIMI

Assistant Restaurant Manager

### AFIQZUL ASYRAF BIN AHAMAD

### ZAINURY

Assistant Restaurant Manager

### HASMIRA BINTI HASNAN

Assistant Restaurant Manager

### MUHAMMAD ARIFF NAZRAN BIN

### MOHD RUJAHAN

Assistant Restaurant Manager

### NAWAL ASHIKIN BINTI NILA KARTIKA ALAM

Assistant Restaurant Manager

### AHMAD FAQRUL RADZI BIN ABD SUKOR

Assistant Restaurant Manager

### NUUR IZZAH HAZIRAH BINTI ISMAIL

Officer - Business Administration

## D&N COFFEE AND RESTAURANT MALAYSIA SDN BHD

### WATSUJI MASAHIRO

Senior Manager I

### MUHAMMAD FAIZ BIN SHAHARIN

Restaurant Chef

### NOOR MASNIYANA BINTI MUHAMAD

Restaurant Manager

## SUSHI KING (EAST MALAYSIA) SDN BHD

### MOHD. FAZDEY BIN ROZNE

Assistant Restaurant Manager

## SUSHI KING HOLDINGS SDN BHD

### NURZAHIDAH BINTI ABDULLAH

Executive - IT

## KOKUBU FOOD LOGISTICS MALAYSIA SDN BHD

### ANIS HUSNA BINTI ABDUL HALIM

Executive - Halal & Quality

## MIRAKU SDN BHD

### LYE AH CHUN

Team Leader

### CHOW SOK WAI

Team Leader

### MARVIN JOHN

Assistant Cook





## INVESTMENT HOLDING

- Texchem Resources Bhd [197301002868 (16318-K)]

## INDUSTRIAL DIVISION

- Texchem Materials Sdn Bhd [199901012055 (486955-M)]
- Texchem Malaysia Sdn Berhad [197301002067 (15608-V)]
- New Material (Malaysia) Sdn Bhd [198901012436 (189744-V)]
- Lifeon Asia Sdn Bhd [201501006207 (1131539-X)]
- Texchem Singapore Private Limited
- Texchem Materials (Thailand) Ltd
- PT. Texchem Indonesia
- Texchem Materials (Vietnam) Co Ltd

## POLYMER ENGINEERING DIVISION

- Texchem Polymer Engineering Sdn Bhd [201401000097 (1076167-T)]
- Texchem-Pack (M) Sdn Bhd [197901000413 (44673-D)]
- Texchem-Pack (Johor) Sdn Bhd [199301017194 (271932-P)]
- Texchem-Pack (PP) Sdn Bhd [197901009434 (53719-T)]
- Eye Graphic Sdn Bhd [199001015004 (206673-D)]
- Texchem Life Sciences Sdn Bhd [199001010362 (201932-M)]
- Texchem Advanced Products Incorporated Sdn Bhd [200901029123 (872228-T)]
- Texchem-Pack (Thailand) Co Ltd
- Texchem-Pack (Vietnam) Co Ltd

## FOOD DIVISION

- Texchem Food Sdn Bhd [200101029232 (564990-P)]
- A.S.K Andaman Limited
- Texchem Food (Myanmar) Limited
- Texchem Marine Labutta Limited
- Texchem Aquaculture (Myanmar) Limited

## RESTAURANT DIVISION

- Sushi King Holdings Sdn Bhd [201401047182 (1123371-P)]
- Sushi King Sdn Bhd [199501001007 (330201-V)]
- Miraku Sdn Bhd [200601022908 (742662-X)]
- Sushi King (East Malaysia) Sdn Bhd [200701025301 (783322-M)]
- Kokubu Food Logistics Malaysia Sdn Bhd [201601021215 (1192154-D)]
- D&N Coffee and Restaurant Malaysia Sdn Bhd [201501022554 (1147883-H)]
- Wilpack Food Services Sdn Bhd [197901007808 (52094-A)]
- Sea Master Food Sdn Bhd [199001012771 (204341-V)]

## CORPORATE SERVICES DIVISION

- Texchem Corporation Sdn Bhd [198001005857 (59641-U)]
- Texchem Risk Management Sdn Bhd [199001002612 (194178-K)]

## VENTURE BUSINESS DIVISION

- Texchem Polymers Sdn Bhd [200501000940 (677985-M)]

## ASSOCIATED COMPANIES

- Merieux NutriSciences Malaysia Sdn Bhd [200001012320 (514926-V)]
- Otafuku Sauce Malaysia Sdn Bhd [201601011761 (1182692-D)]

# TEXVIEW

## PUBLISHED BY

### TEXCHEM GROUP OF COMPANIES

CORPORATE HEADQUARTERS

Level 18 & 19, Menara Boustead Penang

39, Jalan Sultan Ahmad Shah

10050 Penang, Malaysia

T 604-229 6000

[www.texchemgroup.com](http://www.texchemgroup.com)

## LEGAL CLAUSE

Materials in part or whole cannot be reproduced without prior written consent from the publisher. While all reasonable care has been taken, the publisher, editor-in-chief and editorial board shall not be held responsible for representations or claims (visual or otherwise) contained herein. All views and opinions contained in this publication are not necessarily that of the publishers'.